

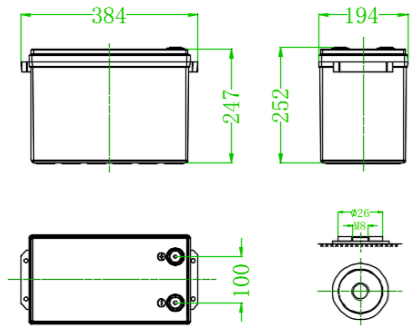
BG-12230

# 12V 230Ah <sup>LiFePO4</sup>

Lithium Iron Phosphate  
Deep Cycle Battery



### Physical Dimension-mm

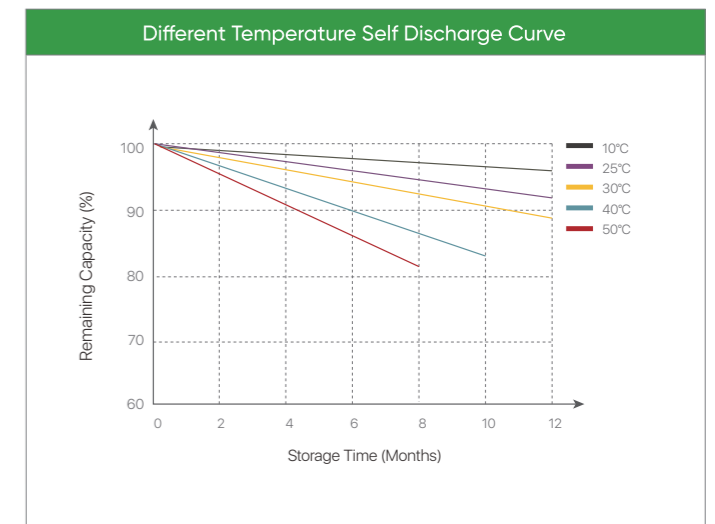
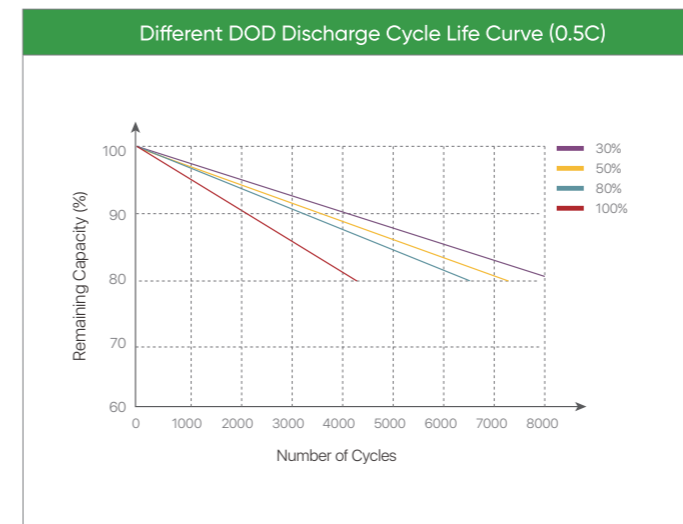
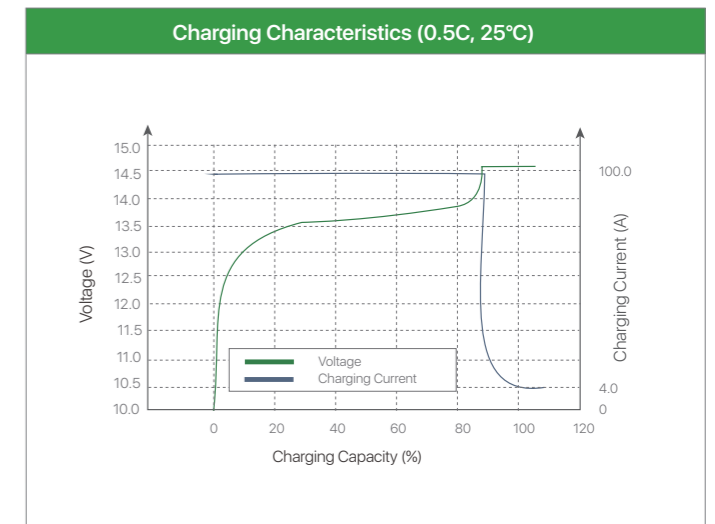
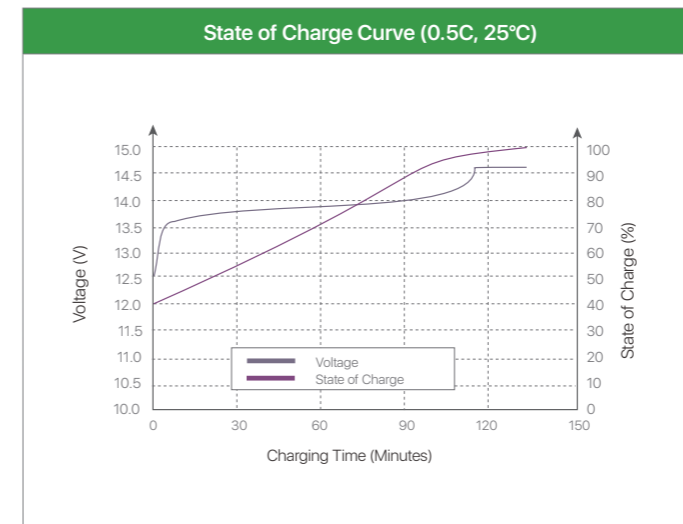
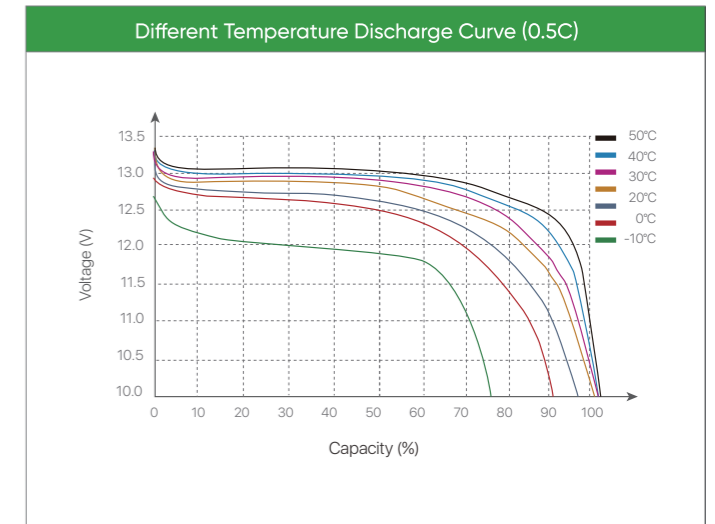
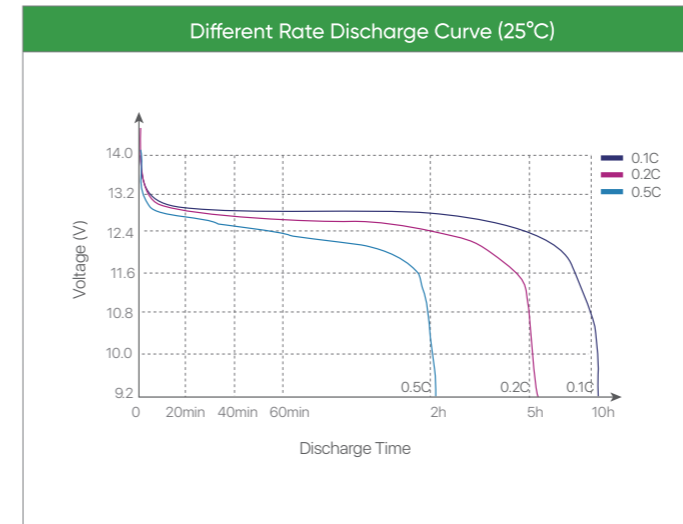


- Lighter Weight**  
About 40% of the weight of a comparable lead acid battery. Easy to replace lead acid batteries.
- Higher Power**  
Delivers twice power of lead acid battery. Higher discharge rate, while maintaining high energy capacity.
- Longer Cycle Life**  
Offers up to 20 times longer cycle life and five times longer float/calendar life than lead acid battery.
- Superior Safety**  
Lithium Iron Phosphate chemistry eliminates the risk of explosion or combustion due to high impact, overcharging or short circuit.

Specification			
Nominal Voltage	12.8V	Max. Continuous Discharge Current	150A
Nominal Capacity	230Ah / 2944Wh	Peak Discharge Current	450A±160A (0.5-1.5S)
BMS	Bluetooth with Smartphone App	Discharge Cut-off Voltage	10V±0.5V
Cycle Life	>6000 cycles @0.5C / 80%DOD	Charge Temperature	0°C~55°C @60±25% Relative Humidity
Months Self Discharge	<3%	Discharge Temperature	-20°C~60°C @60±25% Relative Humidity
Efficiency of Charge	100% @0.5C	Storage Temperature	-20°C~45°C @60±25% Relative Humidity
Efficiency of Discharge	96~99% @0.5C	Protection Class	IP65
Charge Voltage	14.2~14.6V	Approx. Dimensions	384*194*255mm
Charge Mode	0.2C to 14.6V, then change to 0.02C (CC/CV)	Approx. Weight	22kg
Recommended Charge Current	100A	Terminal	M8
Max. Charge Current	150A	Maximum Modules in Series&Parallel	4S4P
Charge Cut-off Voltage	14.6V±0.2V	Monitoring Option	Heating and Active equalization

## 12V230AH

BG-12230



(Note) All above information shall be changed without prior notice, Basen reserves the right to explain and update the latest information.